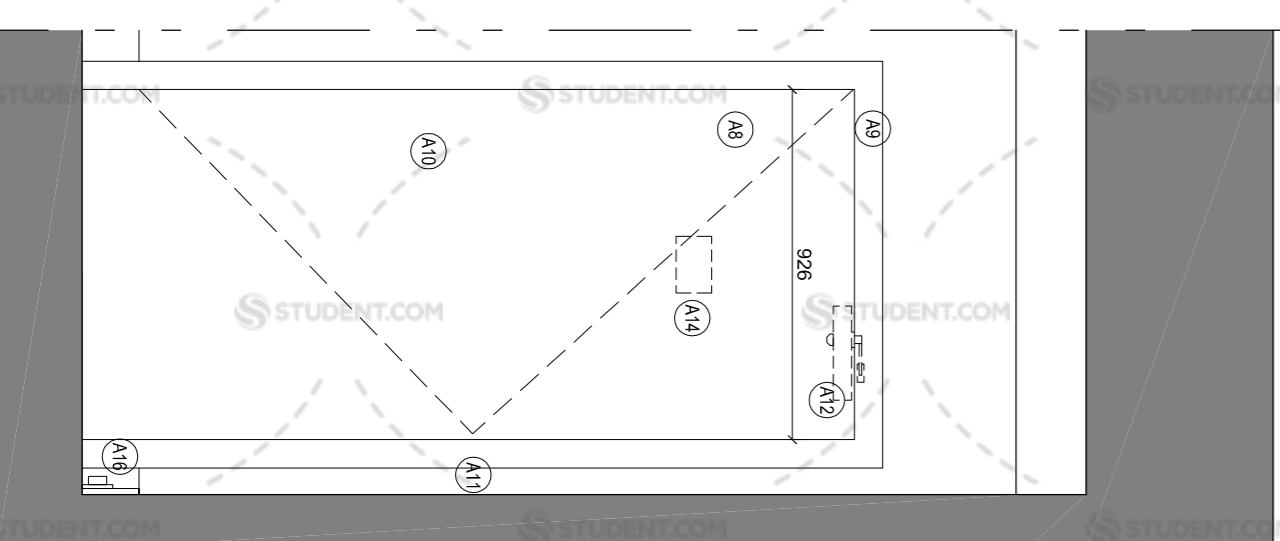
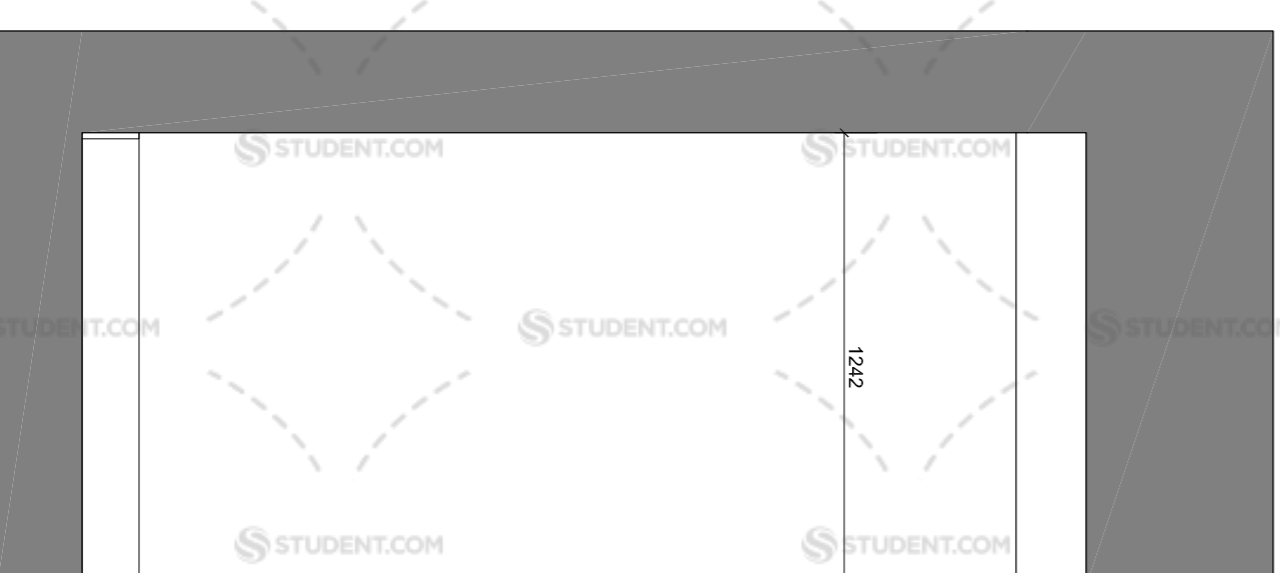
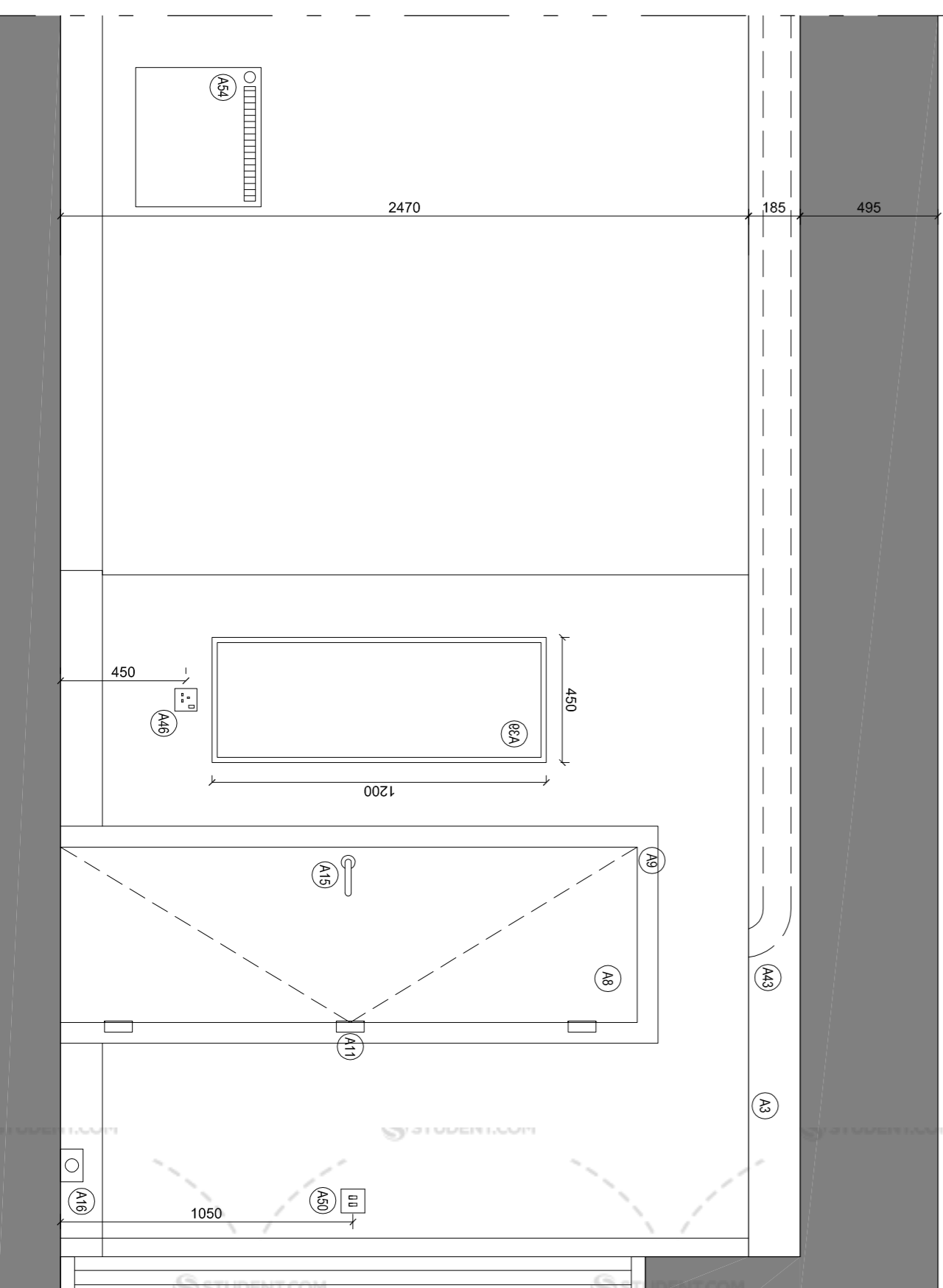
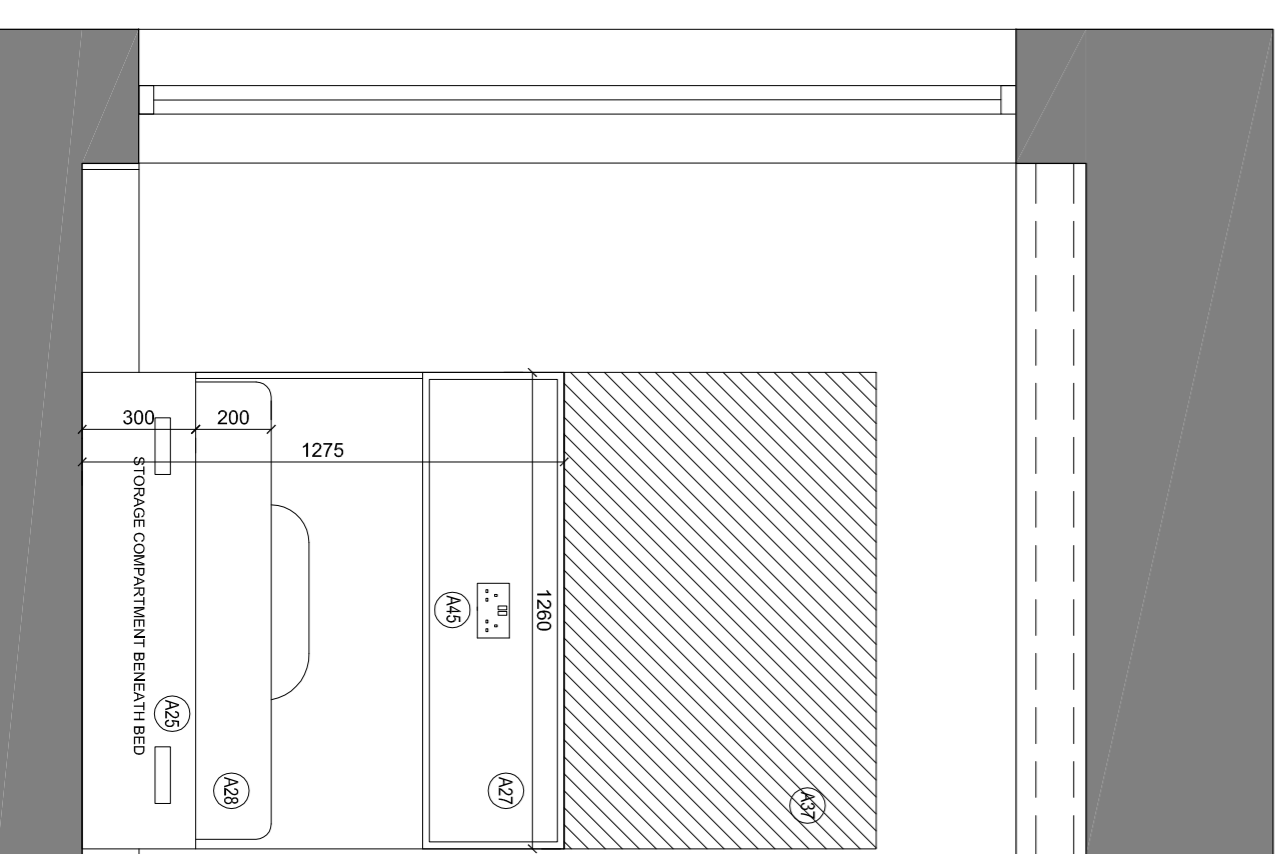
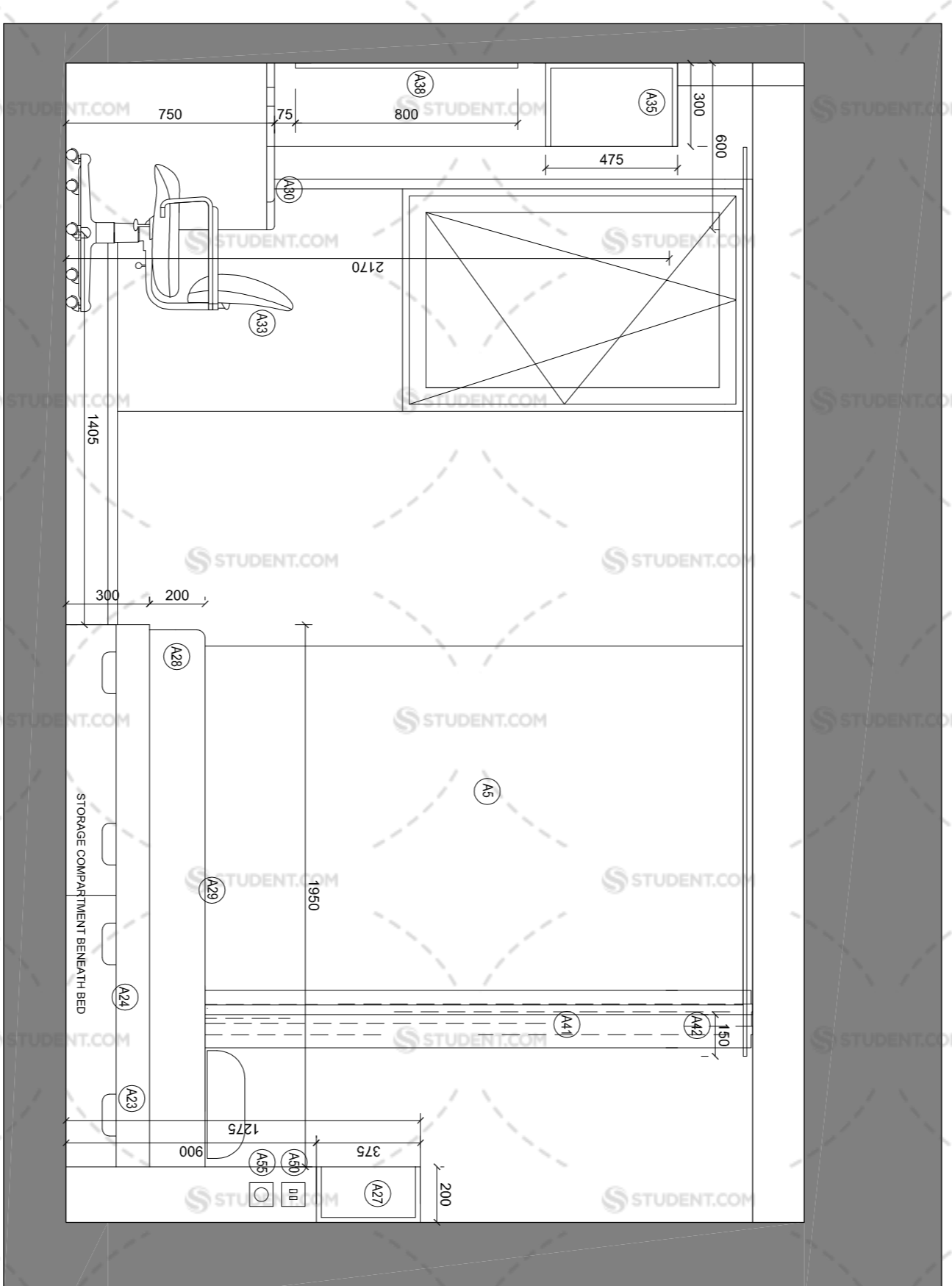
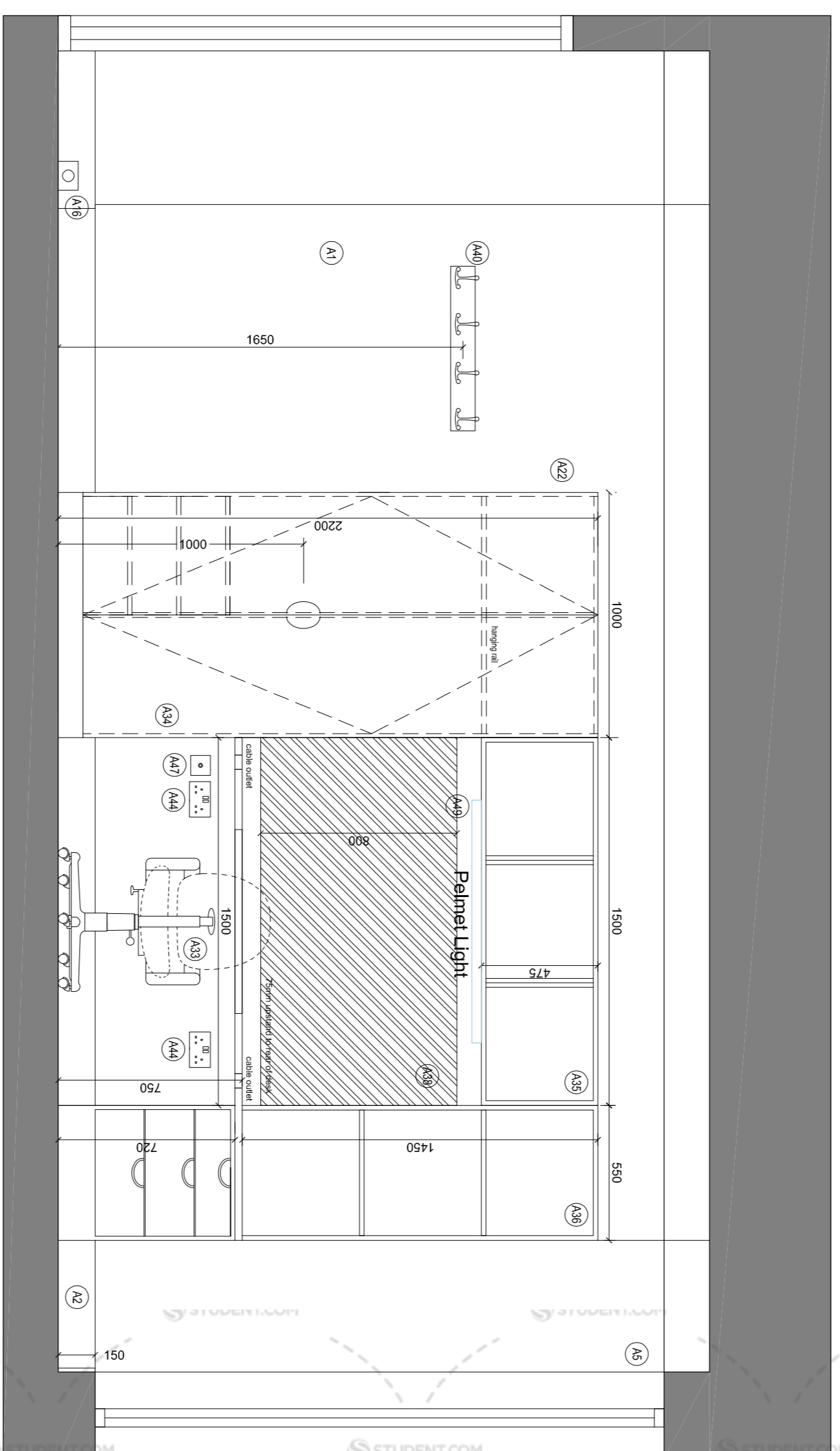


- Revision
- A 24.07.14 Drawers removed from below desk. Wardrobe dimensions increased. Mirror located opposite wardrobes on pod wall.
  - B 29.08.14 Vertical dimensions adjustment. Thickness wall amended.
  - C 12.09.14 Added Reflected Ceiling Plan + Electrics & Lightings.
  - D 17.09.14 Additional light switch connection shown on ceiling plan and double socket moved to middle of headboard.
  - E 03.11.14 Wardrobe width amended (1000mm). Tall Storage Unit width amended (550mm). Legend amended. Heater relocated. PIR added to shower pod. PIR address/ sockets level raised to 450mm above FFL.

NOTE: WINDOW ELEVATIONS ARE INDICATIVE



LEGEND

- CLUSTER BEDROOM
- A1 Dry-lined, to receive paint finish
  - A2 Skirting 150 x 16mm pencil round, to receive paint finish
  - A3 Dry-lined, to receive paint finish
  - A4 Refer to technical specification and drawings
  - A5 Opening vents to be tilt & turn (generally) to provide ventilation in accordance with the Project Ventilation Strategy and to provide access for safe cleaning from the inside.
  - A6 100mm Integral Reactor with key override (subject to Client / CDMCA approval)
  - A7 Timber veneered doorset with painted SW door frame OR Timber effect HPL faced doorset with painted steel door frame
  - A8 75 x 15mm architrave, to receive paint finish
  - A9 Standalone (battery powered), DDA Compliant FR Electronic Lock with RFID technology with additional single cylinder lock for manual override
  - A10 Hinges 1 1/2 Pairs
  - A11 1 Pair
  - A12 Floor mounted door stop
  - A13 Room identity signage provided by Contractor as per Moliant Street
  - A14 Timber veneered doorset with painted SW door frame OR Timber effect HPL faced doorset with painted steel door frame
  - A15 15 x 15mm architrave, to receive paint finish
  - A16 15 x 15mm architrave, to receive paint finish
  - A17 15 x 15mm architrave, to receive paint finish
  - A18 15 x 15mm architrave, to receive paint finish
  - A19 Skirting mounted door stop
  - A20 Bespoke built-in bedroom furniture with HPL finish to include different colours/finishes - refer to indicative furniture types. Soft Close drawers and hinges (120° hinges)
  - A21
  - A22 Cabin Bed 340(h) x 1260(w) x 1950(l)mm O/A Frame Dimensions
  - A23 Hinged access panels with the horizontal mattress base to provide access to under bed storage
  - A24 2 no. ventilation grilles within the foot panel
  - A25 2 no. ventilation grilles within the side of bed 1275(h) x 1950(l)mm
  - A26 2 no. ventilation grilles within the side of bed 1275(h) x 1950(l)mm
  - A27 Bedhead panel with wall plate of bed 1275(h) x 1950(l)mm
  - A28 4 Extra-deep Mattress (200mm dp) with 12.5 gauge springs, rod edges and standard Chic 5 FR fabric finish
  - A29 4 Spunbond Anti-Allergy Mattress Protector
  - A30 26mm Thick HPL R/L Pedestal Desktop 1500(w) x 800(d)mm with 75 (h)mm upstand to match desk
  - A31 Chrome Support Leg
  - A32 Operators Chair
  - A33 Wardrobe - 2200 (h) x 1000 (w) x 600 (d)mm inc. 100 (h)mm plinth. Centre divide with high and low level hanging rails to one side. 3 no. shelves to the wall mounted bookshelf - 1500 (w) x 475 (h) x 300 (d)mm over desk with palm rest lighting
  - A34 Tall Storage unit 2200 (h) x 580 (w) x 600 (d)mm at the end of the desk with 3 no. drawers up to 720 (h)mm and 3 no. open shelves 300mm deep (the lowest shelf is to match desktop)
  - A35 Fabric Pin Board 600 (h) x 1260 (l) mm
  - A36 Bedhead 1825 (h) x 1260 (l) mm
  - A37 Bedhead 1825 (h) x 1260 (l) mm
  - A38 Fabric Pin Board 600 (h) x 1500 (w)mm above desk
  - A39 Framed mirror 1200 (h) x 450 (w)mm to match bedroom furniture
  - A40 4 no. Hatcoat hooks mounted on wall plate to match bedroom furniture
  - A41 FR Backcut Chair and associated track to suit window aperture
  - A42 1 no. Hatcoat hook mounted on wall plate to suit window aperture
  - A43 Each pod to be individually ventilated to an external grille (TL5000)
  - A44 2 no. DSSO adjacent to desk
  - A45 DSSO integrated within bed head
  - A46 DSSO adjacent to mirror
  - A47 DSSO adjacent to mirror
  - A48 DSSO adjacent to mirror
  - A49 DSSO adjacent to mirror
  - A50 2 no. 2-Way light switches (by bedroom door and at bed-head) operating main light fittings & Palmrest light.
  - A51 1 no. 2-Way light switch (by bedroom door and at bed-head) operating main light fittings & Palmrest light.
  - A52 1 no. 2-Way light switch (by bedroom door and at bed-head) operating main light fittings & Palmrest light.
  - A53 1 no. 2-Way light switch (by bedroom door and at bed-head) operating main light fittings & Palmrest light.
  - A54 1 no. 2-Way light switch (by bedroom door and at bed-head) operating main light fittings & Palmrest light.
  - A55 1 no. 2-Way light switch (by bedroom door and at bed-head) operating main light fittings & Palmrest light.
  - A56 1 no. PIR light controls set in ensuite ceiling

Manson Architects

Watkin Jones

Client	Abbeyhill Student Residences
Project	Abbeyhill Student Residences
Drawing Title	Level 00 Plan
Drawing No.	1975_603
Issue Status	PRELIMINARY
Date	12/09/14
Scale	1:20 @ A1
Drawn	MVO
Checked	
Issue	
Project	Abbeyhill Student Residences
Client	Watkin Jones
Address	10 Balfour Road, Edinburgh EH4, SBL
Phone	T: 0131 225 2829
Fax	F: 0131 226 2716
Email	E: info@mansonarchitects.co.uk
Website	www.mansonarchitects.co.uk

All dimensions and levels to be checked on site and the Architect to be informed of any discrepancies prior to the commencement of work. All dimensions are to be checked on site. All dimensions are to be checked on site. All dimensions are to be checked on site. All dimensions are to be checked on site.